

EMERSE: an easy-to-use, self-service search engine and chart review tool for EHR notes

EMERSE, 一個易於使用的自助式電子病歷搜索引擎

February 2, 2023

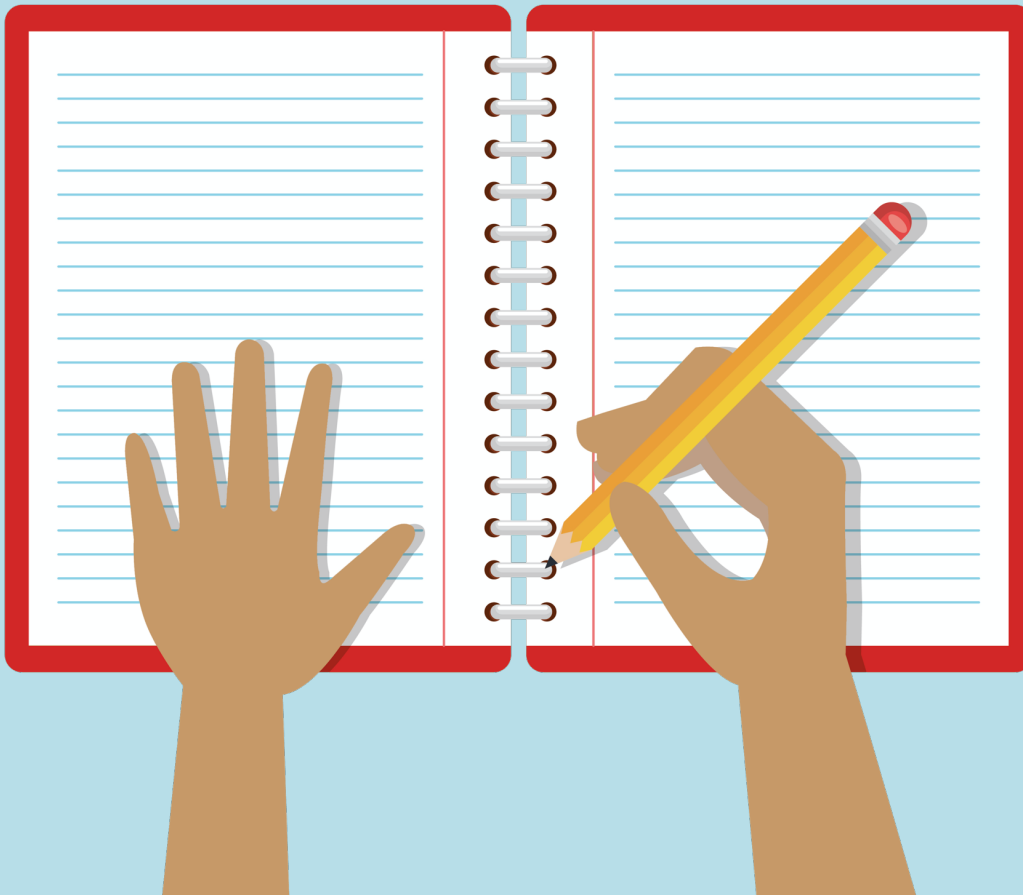


David Hanauer, MD, MS
Dept of Learning Health Sciences
University of Michigan
hanauer@umich.edu

Twitter: @informaticsGeek
@projectEMERSE
Web: project-emerse.org

<http://project-emerse.org/presentations.html>

If you're thinking of taking notes or want to visit links



these slides can be found at:

this link will be
on most slides



em@rse
ELECTRONIC MEDICAL RECORD SEARCH ENGINE

<http://project-emerse.org/presentations.html>

Disclosures

Funding: NIH (NCI, NCATS); PCORI

Licenses/Royalties: EMERSE “Synonyms”
(used for query expansion) which is
licensed by the U of Michigan

Free for academic use
within EMERSE

em@rse
ELECTRONIC MEDICAL RECORD SEARCH ENGINE

<http://project-emerse.org/presentations.html>





I am here to tell you
about EMERSE

em@rse
ELECTRONIC MEDICAL RECORD SEARCH ENGINE

<http://project-emerse.org/presentations.html>

2021 study out of UC Irvine: *Design, Implementation, and Usability of the Electronic Medical Record Search Engine (EMERSE) Tool*

<https://escholarship.org/uc/item/44p23878>

“Users unanimously responded that they would recommend the system to others, and...for a tool they found so useful, they believed that far too few people both within and outside of their network knew about the tool’s existence.”



<http://project-emerse.org/presentations.html>

Unstructured vs Structured Data

EMERSE is for this...	...not this
<i>Unstructured Data (free text)</i>	<i>Structured Data</i>
Mrs. Jones is a 56 year old female with a history of HTN, hypercholesterolemia, and T2DM who comes to the clinic today with a 3 day h/o dizziness and severe headache on the left side.	WBC: 5.6 Total cholesterol: 182 Weight: 67.4 AST: 30 ALT: 52

80% of EHR data are in unstructured free text



structured data

unstructured data/free text

The EMERSE solution

- A system “for the people”
- Users search the notes on their own
 - No need to wait in a queue for an analyst or a data scientist
- Easy-to-use for non-technical researchers
- Doesn't over-promise: user interaction is required



The EMERSE solution

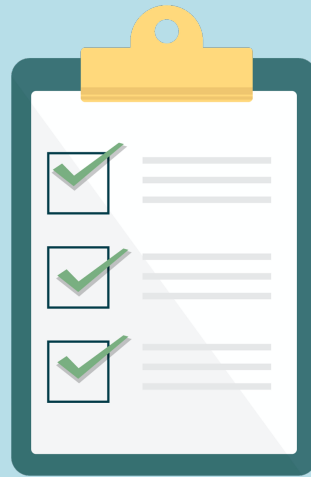


- A system “for the admins”
- Enterprise grade, easy to support
- Configurable with roles/privileges to control access
- Data are kept secure within a centralized, audited system
 - No need to download/store the data elsewhere

Find cohorts

EMERSE allows you to find cohorts based on things mentioned in the notes

- diseases
- drugs
- symptoms
- anything*

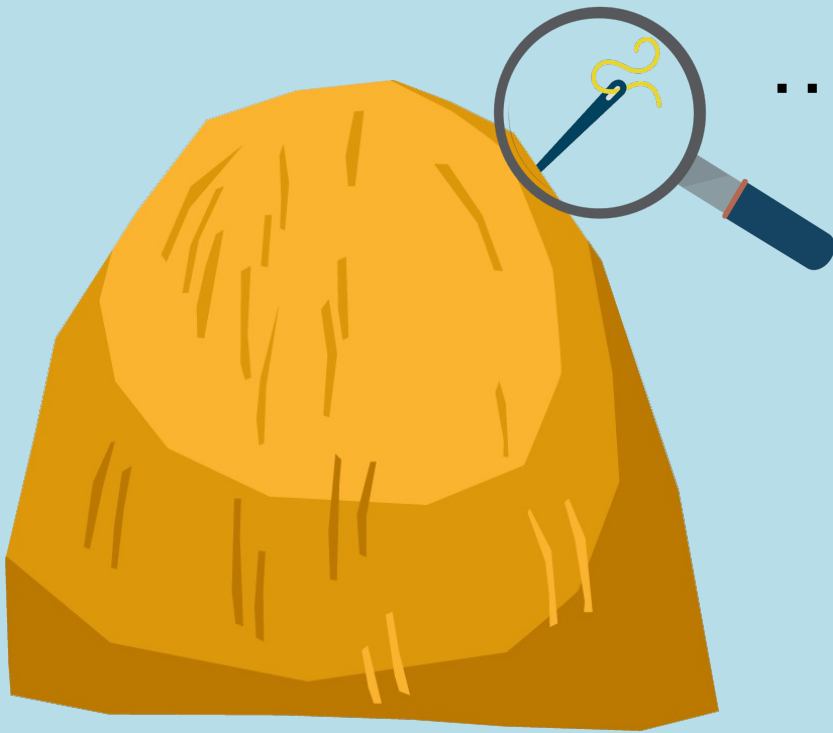


*if it is mentioned

Find cohorts

It's perfect for finding rare things...

...like rare cancers



See this talk for more details:

<https://vimeo.com/677482835>

“Using EMERSE to Improve Research
Involving Rare Cancers”

em⇌**rse**
ELECTRONIC MEDICAL RECORD SEARCH ENGINE

<http://project-emerse.org/presentations.html>

Highlight documents for chart review

Thoracocentesis confirmed the recurrence of **mantle cell lymphoma**. Disease restaging work-up revealed multicompartiment lymphadenopathy in the neck, mediastinal, retrocrural, retroperitoneal and pelvic regions. **Bone marrow** was also involved. The patient was treated with a total of six cycles of rituximab, cyclophosphamide, vincristine, doxorubicin and dexamethasone (**R-HyperCVAD**) completed in January 2007. That treatment led to complete remission that lasted until October 2008, when the disease was found to have recurred in the left pleural space and **retroperitoneum** without **bone marrow** involvement.

<https://jmedicalcasereports.biomedcentral.com/articles/10.1186/1752-1947-4-329>



<http://project-emerse.org/presentations.html>

Our philosophy

It's important to see the terms/concepts in the context of the original text to truly understand the clinical meaning.



Phrase: A 31-year-old Caucasian British woman with a history of long-term zopiclone use
 >>>> Phrase
 a 31 year old caucasian british woman with a history of long term zopiclone use
 <<<<< Phrase
 >>>>> Mappings
 Meta Mapping (696):
 567 31 [Quantitative Concept]
 567 YEAR (year) [Temporal Concept]
 567 Old [Temporal Concept]
 579 Caucasian British (White British) [Population Group]
 733 WOMAN (Woman) [Population Group]
 567 History [Occupation or Discipline]
 579 Long Term (Long-term) [Temporal Concept]
 567 ZOPICLONE (zopiclone) [Organic Chemical,Pharmacologic Substance]
 578 Use of [Functional Concept]
 567 history (Historical aspects qualifier) [Functional Concept]
 567 history (History of present illness (finding)) [Finding]
 567 History (Medical History) [Finding]
 567 History (Concept History) [Conceptual Entity]
 567 History (History of previous events) [Finding]
 567 History, NOS (History of (present illness) (contextual qualifier) (situation)) [Intellectual Product]
 733 Woman (Human, Female adult) [Human]
 567 /Year (per year) [Temporal Concept]
 <<<<< Mappings
 Phrase: and
 Phrase: anorexia nervosa
 anorexia nervosa
 Meta Mapping (1000):
 1000 ANOREXIA NERVOSA (Anorexia Nervosa) [Mental or Behavioral Dysfunction]
 Phrase: was
 Phrase: admitted as an inpatient
 admitted as an inpatient
 1000 Admitted as an inpatient (Admitted as an inpatient:Find:Pt:Patient:Ord) [Clinical Attribute]
 1000 Admitted as an inpatient [Finding]
 Phrase: for a ten-day alcohol detoxification.
 ten day alcohol detoxification
 Meta Mapping (888):
 694 TEN-DAY (Ten-Day Report) [Intellectual Product]
 861 Alcohol detoxification (Detoxication psychiatric therapy for alcoholism) [Therapeutic or Preventive Procedure]
 861 Alcohol detoxification [Therapeutic or Preventive Procedure]
 Processing
 inter_12192022_20-07:23_27484_hanauer@umich.edu_6099
 65139.tmp.tx.2: Her weekly (four days out of seven) intake of alcohol was 180 units and her daily intake of zopiclone, 30 mg.
 Phrase: Her weekly
 weekly
 1000 Weekly [Temporal Concept]
 1000 Weekly (Chief Complaint is Present Weekly) [Finding]
 Phrase: (four days out of seven
 four days out of seven
 Meta Mapping (752):
 593 Four [Quantitative Concept]
 593 Out (Out (direction)) [Spatial Concept]
 781 SEVEN-DAY (Seven-Day Report) [Intellectual Product]
 593 Out (Removed) [Qualitative Concept]
 Phrase:)
 Phrase: intake of alcohol
 intake of alcohol
 Meta Mapping (858):
 858 intake alcohol (Alcohol consumption) [Individual Behavior]
 Phrase: 180 units
 180 units
 Meta Mapping (861):
 861 Units (Unit) [Quantitative Concept]
 861 Units (Unit of Measure) [Quantitative Concept]
 861 UNITS (Enzyme Unit) [Quantitative Concept]
 861 Units (Unit - NCI Thesaurus Property) [Quantitative Concept]
 Phrase: her daily intake of zopiclone,
 her daily intake of zopiclone
 Meta Mapping (733):
 593 HER (Herero language) [Language]
 760 Daily [Temporal Concept]
 760 Intake [Functional Concept]
 593 ZOPICLONE (zopiclone) [Organic Chemical,Pharmacologic Substance]
 760 Daily (Chief Complaint is Present Daily) [Finding]
 Phrase: 30 mg.
 30 mg
 694 30% [Quantitative Concept]
 861 MG (Mammography) [Diagnostic Procedure]
 861 mg% (mg/dL) [Quantitative Concept]
 861 Mg (Mg antigen) [Amino Acid, Peptide, or Protein,Immunologic Factor]
 861 mg % (Milligram percent) [Quantitative Concept]
 861 Mg++ (magnesium cation) [Element, Ion, or Isotope,Pharmacologic Substance]
 861 MG (US Military Commissioned Officer O8) [Classification]
 861 MG (Mongol Chinese) [Population Group]
 Processing
 inter_12192022_20-07:23_27484_hanauer@umich.edu_6099
 65139.tmp.tx.3: Apart from a short period five years ago, she had been taking zopiclone for 13 years at daily doses of up to 90 mg.
 Phrase: Apart from a short period five years ago,
 short period five years ago
 Meta Mapping (798):
 673 short period (Short menstrual periods) [Finding]
 637 Five [Quantitative Concept]
 804 YEARS (year) [Temporal Concept]
 Phrase: she
 Phrase: had
 Phrase: been
 Phrase: taking
 taking
 Meta Mapping (966):
 966 Take [Health Care Activity]
 Phrase: zopiclone for 13 years
 zopiclone for 13 years
 Meta Mapping (708):
 770 ZOPICLONE (zopiclone) [Organic Chemical,Pharmacologic Substance]
 604 YEARS (year) [Temporal Concept]
 Phrase: at daily doses of
 at daily doses of
 Meta Mapping (794):
 604 At [Spatial Concept]
 799 Daily Dose [Quantitative Concept]
 604 AT (GATM wt Allele) [Gene or Genome]
 604 AT (AT genotype) [Finding]
 604 AT (Apnea Time) [Quantitative Concept]
 Phrase: up to 90 mg.
 90 mg
 694 >90 [Quantitative Concept]
 694 <90 [Quantitative Concept]
 694 90% [Quantitative Concept]
 Processing
 inter_12192022_20-07:23_27484_hanauer@umich.edu_6099
 65139.tmp.tx.4: She admitted to using 'on top' of her prescribed medication, purchasing extra tablets from friends or receiving them gratis from her partner.
 Phrase: admitted to using '
 admitted to using
 Meta Mapping (746):
 790 admitted (Hospital admission) [Health Care Activity]
 790 Using (Use of) [Functional Concept]
 790 Admitted (Admission activity) [Health Care Activity]
 Phrase: on top' of her prescribed medication,
 prescribed medication
 694 Prescribed [Health Care Activity]
 861 Medication (Pharmaceutical Preparations) [Pharmacologic Substance]
 861 MEDICATION (Concomitant Agent) [Idea or Concept]
 861 medication (medication - HL7 publishing domain) [Intellectual Product]
 861 Medication (Medications) [Intellectual Product]
 Phrase: purchasing
 purchasing
 1000 Purchasing (Purchase) [Activity]
 Phrase: extra tablets from friends
 extra tablets from friends
 604 Extra (Supernumerary) [Quantitative Concept]
 770 Tablets (Tablet Dosage Form) [Biomedical or Dental Material]
 604 Friends (friend) [Population Group]
 604 Friends (Friends - (Religious Affiliation)) [Population Group]
 Phrase: or
 Phrase: receiving
 receiving
 1000 RECEIVING (Receive) [Qualitative Concept]
 Phrase: them gratis from her partner.
 them gratis from her partner
 Meta Mapping (528):
 593 Partner (Partner in relationship) [Family Group]
 593 Partner [Population Group]
 Processing
 inter_12192022_20-07:23_27484_hanauer@umich.edu_6099
 65139.tmp.tx.5: After detoxification from alcohol and zopiclone, she was prescribed diazepam which she found ineffectual and voiced her intention of returning to zopiclone on leaving the hospital.
 Phrase: After detoxification from alcohol
 after detoxification from alcohol
 Meta Mapping (783):
 604 After (Status post) [Temporal Concept]
 819 Alcohol detoxification (Detoxication psychiatric therapy for alcoholism) [Therapeutic or Preventive Procedure]
 819 detoxification alcohol (Alcohol detoxification) [Therapeutic or Preventive Procedure]
 604 AFTER (Post) [Temporal Concept]
 Phrase: zopiclone,
 zopiclone
 1000 ZOPICLONE (zopiclone) [Organic Chemical,Pharmacologic Substance]
 Phrase: prescribed
 prescribed
 1000 Prescribed [Health Care Activity]
 Phrase: diazepam
 diazepam
 1000 DIAZEPAM (diazepam) [Organic Chemical,Pharmacologic Substance]
 1000 Diazepam (Diazepam measurement) [Laboratory Procedure]
 Phrase: which she
 Phrase: found
 found
 1000 Found (Present) [Finding]
 Phrase: ineffectual
 ineffectual
 Phrase: voiced
 voiced
 966 VOICE (Voice) [Organism Function]
 966 voice (TelecommunicationCapabilities <voice>) [Qualitative Concept]
 966 Voice (Voice G-code) [Intellectual Product]
 Phrase: her intention of
 her intention of
 Meta Mapping (771):
 623 HER (Herero language) [Language]
 790 Intention (Intention - mental process) [Mental Process]
 790 Intention (intent) [Qualitative Concept]
 Phrase: returning to zopiclone
 returning to zopiclone
 Meta Mapping (730):
 756 Return (Return to (contextual qualifier) (qualifier value)) [Qualitative Concept]
 790 ZOPICLONE (zopiclone) [Organic Chemical,Pharmacologic Substance]
 Phrase: on leaving
 leaving
 1000 Leaving (Departure - action) [Activity]
 Phrase: the hospital.
 hospital
 1000 HOSPITAL (Hospitals) [Health Care Related Organization,Manufactured Object]
 1000 Hospital (Hospital environment) [Qualitative Concept]

MetaMap output



<http://project-emerse.org/presentations.html>

Location_Start	Location_End	Semantic	Entity
56	79	problem	long-term zopiclone use
84	100	problem	anorexia nervosa
244	249	frequency	daily
260	269	drug	zopiclone
271	276	strength	30 mg
340	349	drug	zopiclone
350	362	duration	for 13 years
354	362	temporal	13 years
366	371	frequency	daily
387	392	strength	90 mg
428	453	treatment	her prescribed medication
574	583	drug	zopiclone
604	612	drug	diazepam

Case presentation

A 31-year old Caucasian British woman with a history of long-term zopiclone use and anorexia nervosa was admitted as an inpatient for a ten-day alcohol detoxification. Her weekly (four days out of seven) intake of alcohol was 180 units and her daily intake of zopiclone, 30 mg. Apart from a short period five years ago, she had been taking zopiclone for 13 years at daily doses of up to 90 mg. She admitted to using 'on top' of her prescribed medication, purchasing extra tablets from friends or receiving them *gratis* from her partner. After detoxification from alcohol and zopiclone, she was prescribed diazepam which she found ineffectual and voiced her intention of returning to zopiclone on leaving the hospital.

<https://jmedicalcasereports.biomedcentral.com/articles/10.1186/1752-1947-4-403>



EMERSE is *≡fast*

Query to identify all patients with the following	Reporting DB time (s)	EMERSE time (s)	EMERSE advantage
cavernous hemangioma	14,652	2	7,320x
gray platelet syndrome	14,940	2	7,470x
inferior lingular segment of the left upper lobe	17,784	9	1,980x

...enabling real-time querying



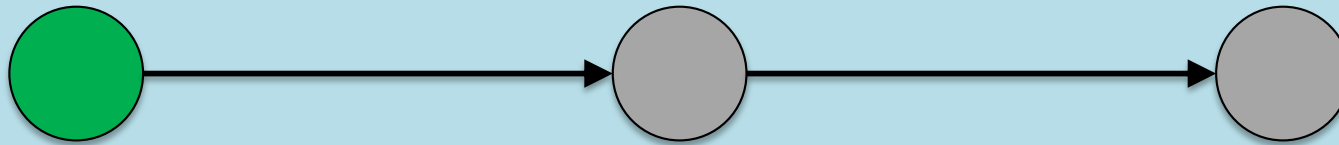
<http://project-emerse.org/presentations.html>

Synonyms

- Used for query expansions
- User-controlled
- Multiple datasets can be included
- EMERSE Synonyms
 - acronyms, abbreviations, professional/consumer terms, misspellings, trade/generic drug names, species, chemo regimens, phrase variations, malapropisms, idioms, neologisms, organizations, companies, & more
 - 1.7 million unique entries (85% not within UMLS)



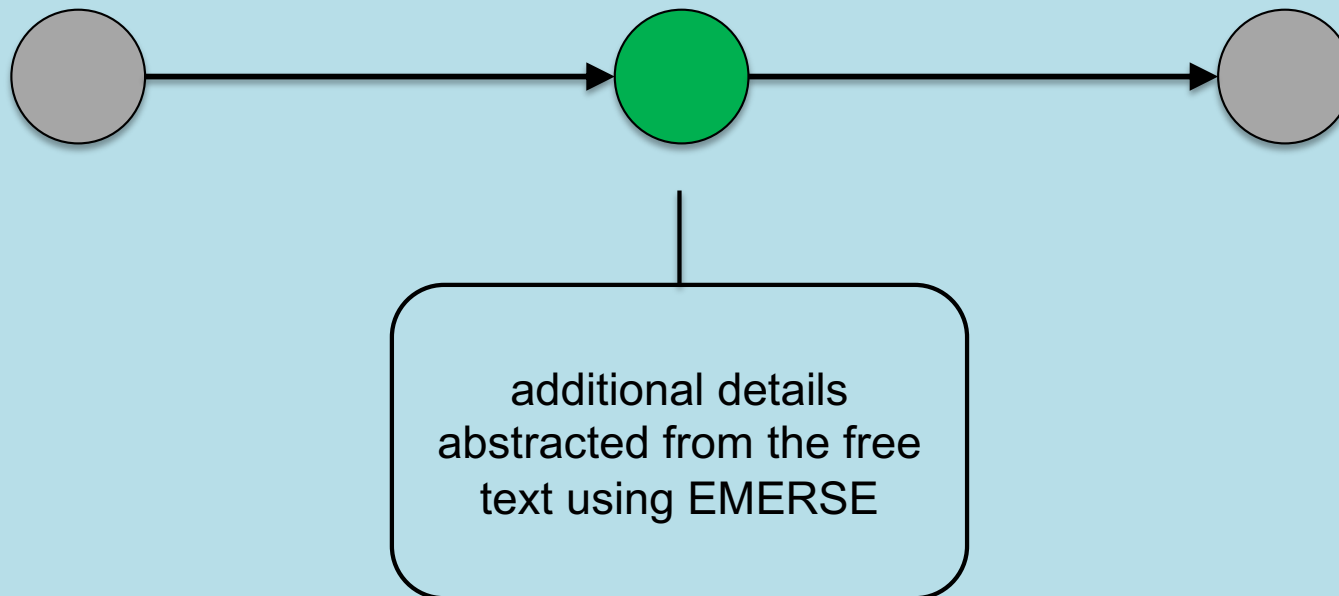
Typical workflow



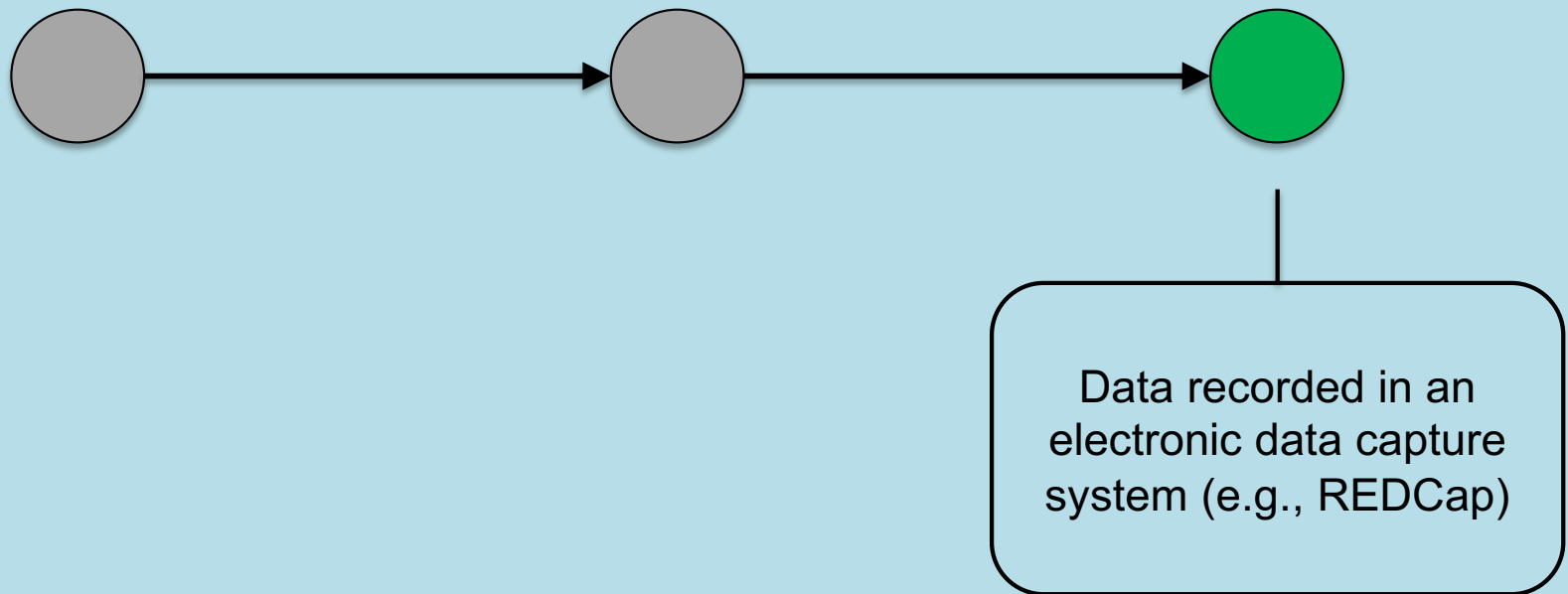
initial cohort identified
with a cohort discovery
tool using structured
data (or via EMERSE
'Find Patients')

Cohort discovery tools:
i2b2/ENACT, Leaf, etc.

Typical workflow



Typical workflow



Publications using EMERSE

590

papers and abstracts



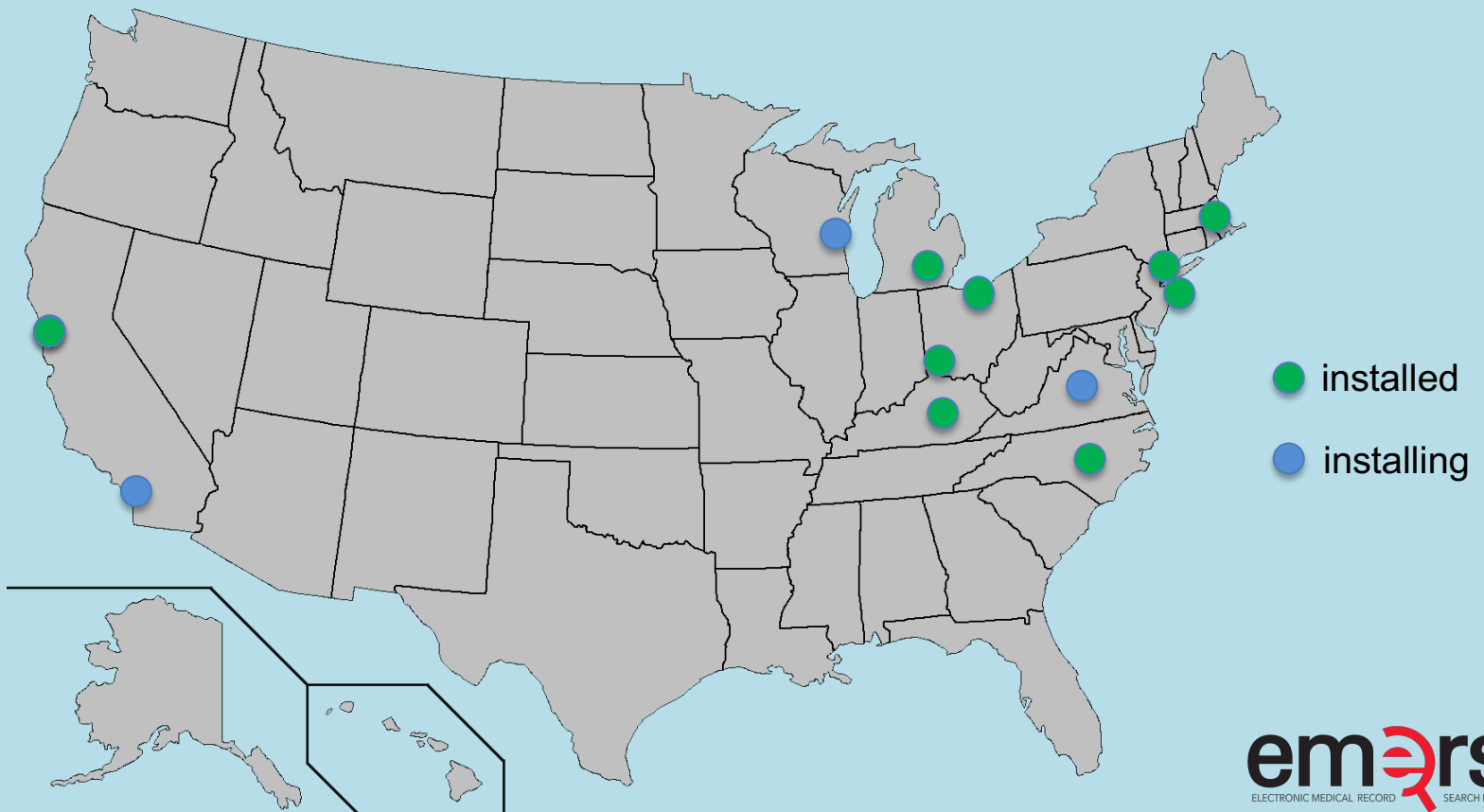
Full list at:

<http://project-emerse.org/publications.html>

em@rse
ELECTRONIC MEDICAL RECORD SEARCH ENGINE

<http://project-emerse.org/presentations.html>

Where is EMERSE?



<http://project-emerse.org/presentations.html>

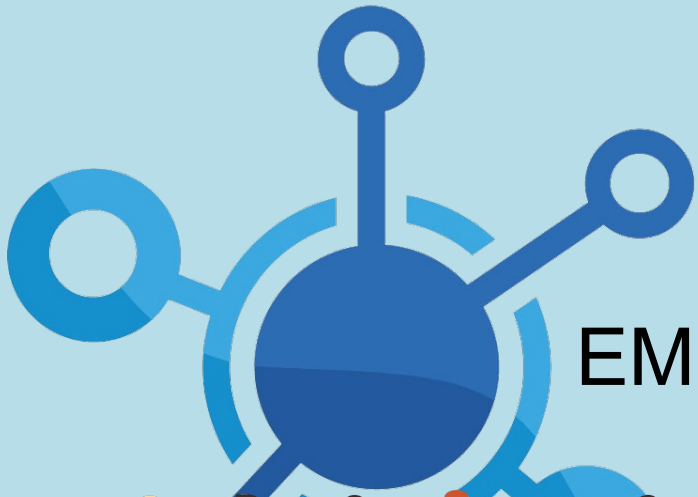
Where is EMERSE?



- installed
- installing

em@rse
ELECTRONIC MEDICAL RECORD SEARCH ENGINE

<http://project-emerse.org/presentations.html>



Now available...

EMERSE Research Informatics Network



real-time, secure
cross-site queries



<http://project-emerse.org/presentations.html>

EMERSE Research Informatics Network



David Hanauer ^

Patients University of Kentucky (66385), University of Michigan (2812337)

Filters

Terms

"renal cell carcinoma"

Results

HIGHLIGHT DOCUMENTS

FIND PATIENTS

SEARCH NETWORK

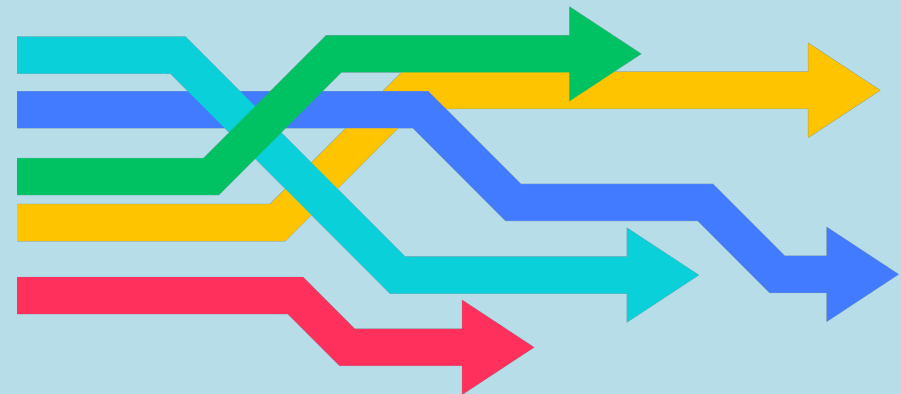
Site	Patient Count
University of Kentucky	[REDACTED]
University of Michigan	[REDACTED]



The future...

Incorporation of NLP features

- negation
- uncertainty
- subject (patient vs other)
- named entity recognition/mapping to ontologies



Data extraction from templated notes

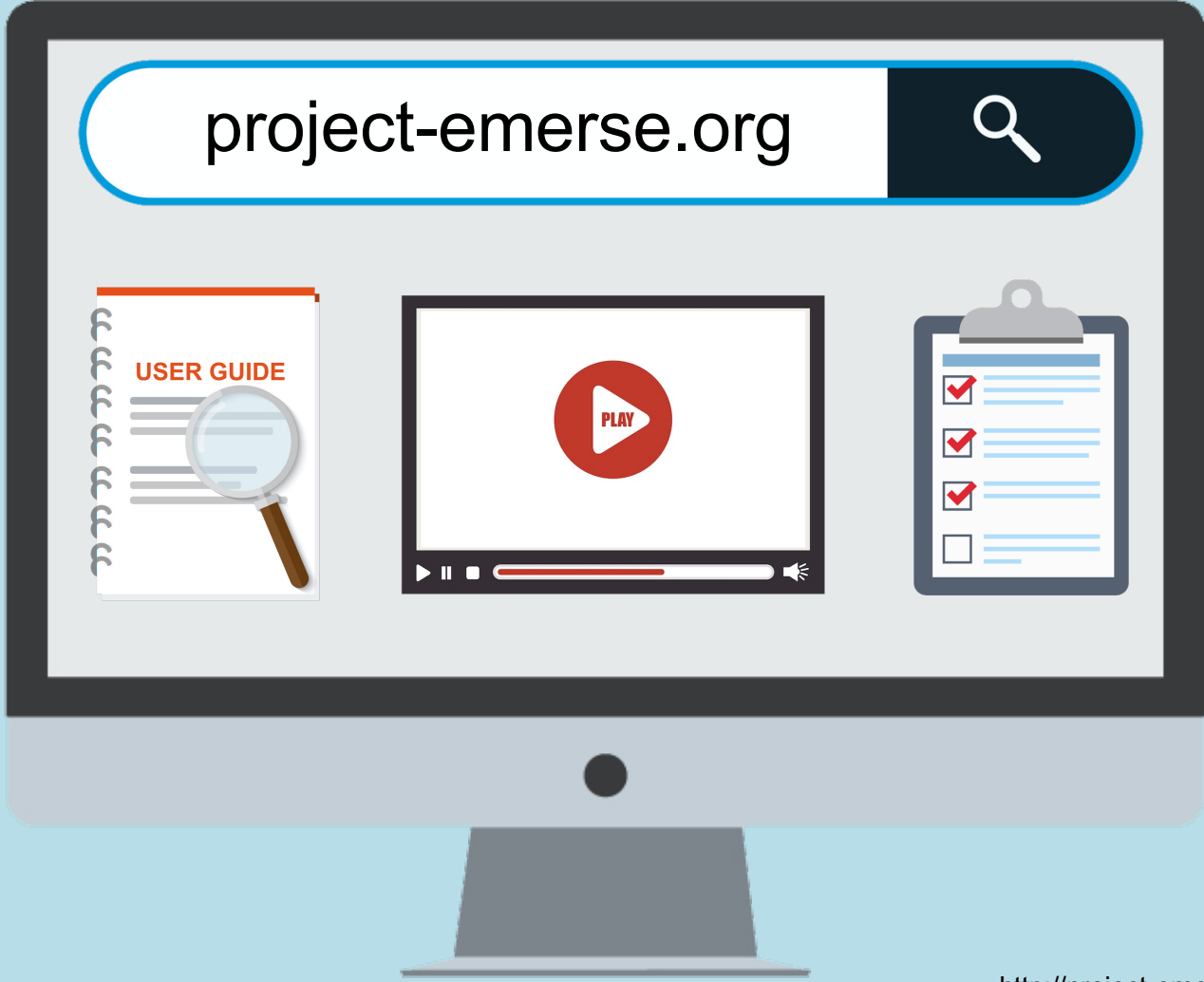
Ultrasonography displayed an inhomogeneous hypoechoic nodule measuring 20mm*17mm (Figure1). Biopsy examination of the lesion revealed **scirrhous carcinoma**. A chest computed tomography (CT) scan for metastases showed abnormal shadows in both upper lung fields. The patient was then referred to our department for definitive workup and treatment. She had no history of cough, sputum, or dyspnea. Our patient had no history of tobacco smoking and no exposure to any dusts associated with a high risk of lung damage. Her past history and family history were unremarkable. A chest X-ray showed slight peripheral infiltration shadows in both upper and middle lung fields (Figure2). A chest CT scan showed patchy peripheral ground-glass opacities and thickened interlobular septa in both upper lung fields (Figure3A). A peripheral blood cell count and serum and biochemical tests were normal. Autoantibody and vasculitis screening was negative. Testing for human immunodeficiency virus infection was negative. Serum carcinoembryonic antigen (CEA) and carbohydrate antigen 153 (CA15-3) were in the normal ranges (1.1ng/mL and 12.5U/mL, respectively), but granulocyte-macrophage colony-stimulating factor (GM-CSF) autoantibody was elevated (29.57?g/mL). Pulmonary function testing revealed normal lung volumes and diffusing capacity. Flexible fiberoptic bronchoscopy was then performed. The retrieved bronchoalveolar lavage fluid (BALF) was transparent; it did not have a milky appearance. However, BALF cytology showed alveolar macrophages with granular materials that stained positively with periodic acid-Schiff (PAS). Histological findings of a transbronchial lung biopsy specimen showed the alveolar spaces to be filled with PAS-positive granular materials (Figure4). As a result, this patient was diagnosed as having PAP.

From our NLP proof-of-concept system

<https://www.ncbi.nlm.nih.gov/pmc/articles/PMC4140142/>



<http://project-emerse.org/presentations.html>





Twitter: @projectEMERSE

publications
software releases
announcements
webinars

Interested in learning more?

LEARN MORE



Contact us to schedule a time with your team for:

- Discussions about research strategies
- Training
- Live demonstrations

Upcoming presentations

EMERSE Community Meeting Series

Date: Tuesday, February 7, 2023, 12:00 – 1:00 PM ET

Register: <https://bit.ly/emerse-february-2023-register>

NCI Emerging Technologies Seminar Series

Date: Tuesday, February 21, 2023, 2:00 – 3:00 PM ET

Register: <https://events.cancer.gov/cssi/technology-seminar/registration>

Links to these meetings are also on our website



<http://project-emerse.org/presentations.html>

EMERSE-team@umich.edu



Lisa Ferguson
David Hanauer
Kellen McClain
Guan Wang